

# SHEAR-FLEX SERIES

20 - 100 LB  
LOAD RANGE



**DFA Sales**  
www.Korfund.com  
info@Korfund.com

## APPLICATIONS



## CROSS-RIB MOUNTING PADS

Shear-Flex are elastomeric pad-type mounts that provide excellent high frequency sound attenuation in many HVAC equipment and machine shop applications. Shear-Flex Pads are very effective in preventing shock and vibration transmissions in non-critical installations – air conditioners, compressors, fans, hammers, generators, presses, and pumps.

Shear-Flex Pads are molded elastomeric pads in a resilient cross-rib design. Standard sheet sizes are 18" x 18" x 3/4" thick and 18" x 36" x 3/4" thick. The segments can easily be cut to fit the required loading

and shape of equipment bases. Shear-Flex Pads are available in three load ranges from 20 to 100 psi. The pads are molded in color-coded, oil-resistant elastomer for easy identification and durability.

Shear-Flex Pads offer exceptional gripping – eliminating the need for bolting or cementing in most applications. Adhesive is available for applications having severe horizontal thrust. Shear-Flex Pads may also be used in multiple layers to increase deflection and are available pre-assembled, cut to size, with steel plates cemented between the layers.

## FEATURES & BENEFITS

- Three load ranges from 20 to 100 psi satisfy a wide variety of deflection requirements.
- Resilient cross-rib design provides exceptional gripping that requires no bolting or cementing.
- Color-coded, oil-resistant elastomer provides simple identification and durability.
- Multiple layer installation offers extra deflection and load range options.

## APPLICATIONS

- Air conditioners
- Processing equipment
- Cooling towers
- Crushers
- Engine gensets
- Textile machinery
- Hammers
- Transformers
- Punch Presses
- Shearing equipment
- Lathes
- Pumps & compressors
- Fans
- Chillers
- General industrial machinery

## TECHNICAL



### ALTERNATELY RAISED RIBS

Exclusive VM feature provides effective vibration isolation over entire load range of 20 to 100 psi. Only the alternate ribs are engaged under light loads.



### NO BOLTING

The exceptional gripping qualities of SHEAR-FLEX eliminate the need for bolting or cementing in most installations. Adhesive is available for applications having severe horizontal thrust.



### EASY TO USE

Simply cut SHEAR-FLEX PAD slightly larger than leg or bearing plate of machine using shears or knife. If load on square inch of pad area exceeds recommended load use FLEX PLATES.



### MULTIPLE LAYERS

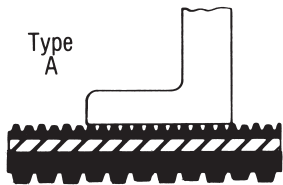
SHEAR-FLEX may be used in multiple layers to increase deflection. Available pre-assembled cut to specified size and with steel plates cemented between layers.

**NOTE:** VMC can mold almost any elastomer into any of its elastomer mount products. Special materials include, but are not limited to, natural rubber, Weather Resistant (WR), High Damped Silicone, Extreme High Temperature (EHT) Silicone, Nitrile and EPDM. Many of these are color coded by hardness.

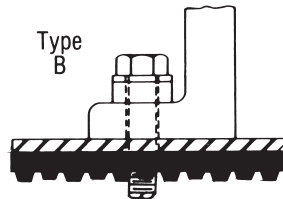


MODEL #	MAX. LOAD, lbs.		DIMENSIONS IN INCHES				
	STEADY	IMPACT*	LENGTH	WIDTH	A	B	C
A-4, B-4, C-4	280	200	2	2	7/8	5/8	3/4
A-9, B-9, C-9	630	450	3	3	7/8	5/8	3/4
A-16, B-16, C-16	1120	800	4	4	7/8	5/8	3/4
A-24, B-24, C-24	1680	1200	6	4	7/8	5/8	7/8
A-36, B-36, C-36	2520	1800	6	6	7/8	5/8	7/8
A-48, B-48, C-48	3360	2400	8	6	7/8	5/8	7/8
A-64, B-64, C-64	4480	3200	8	8	1	3/4	1
A-80, B-80, C-80	5600	4000	10	8	1	3/4	1
A-96, B-96, C-96	6720	4800	12	8	1	3/4	1

\*Use for Hammers, Shears, Punch Presses, Mills, etc.  
**NOTE:** Special Flex-Plate Sizes & Capacities on request.



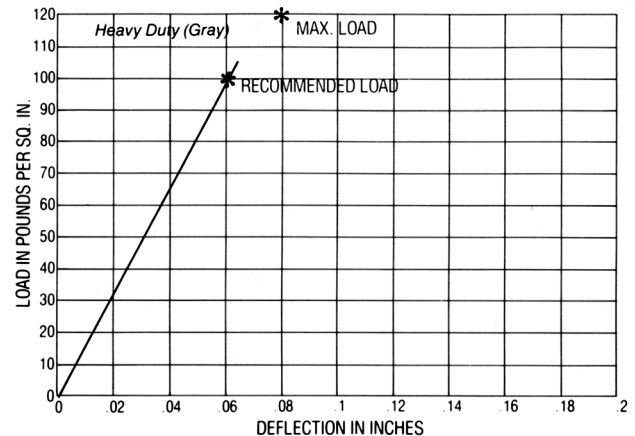
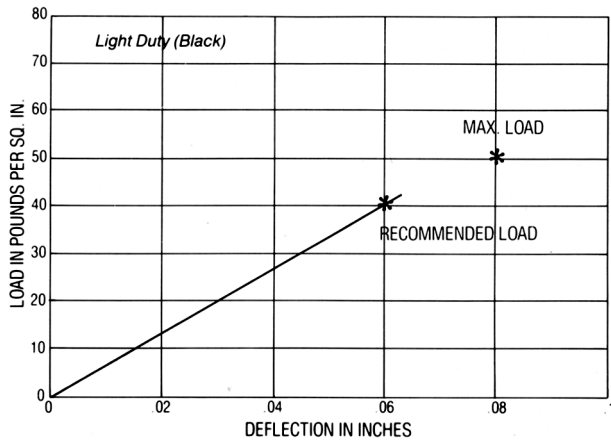
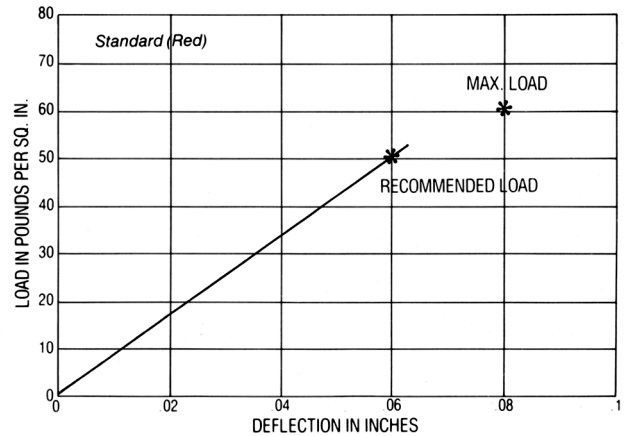
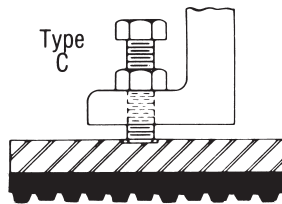
**NO BOLTING REQUIRED —**  
 Type A consists of a steel bearing plate bonded between a floor-gripping Shear-Flex pad and a non-skid, machine-gripping layer of oil-resistant corrugated neoprene.



**IF BOLTING IS PREFERRED —**  
 Type B is furnished with an isolation washer and a 3/4" free hole in the center of the plate. Other hole size and location furnished upon request.

**FOR MACHINES WITH JACK SCREWS —**

Type C makes use of machines' own leveling arrangement. Has an extra-thick steel plate and a counter-bored hole in the center of the plate to prevent shifting of the machine leveling bolt.



**NOTE:** VMC can mold almost any elastomer into any of its elastomer mount products. Special materials include, but are not limited to, natural rubber, Weather Resistant (WR), High Damped Silicone, Extreme High Temperature (EHT) Silicone, Nitrile and EPDM. Many of these are color coded by hardness.