

KMS Series

Steel Spring Vibration Isolators

Features/Benefits

- Load Ranges from 50 to 8,000 lbs.
- Heavy duty welded steel housings
- All directional limit stops
- Reduces Vibration, shock and structureborne noise transmission

Construction/Material Data

- Oil-tempered, high carbon steel springs, powder coated for corrosion resistance
- Horizontal limit stops in molded polyurethane
- Vertical limit stops, neoprene impregnated cotton duck
- Heavy duty all welded construction
- Zinc plated hardware and zinc chromate primed housing and metal parts

Applications

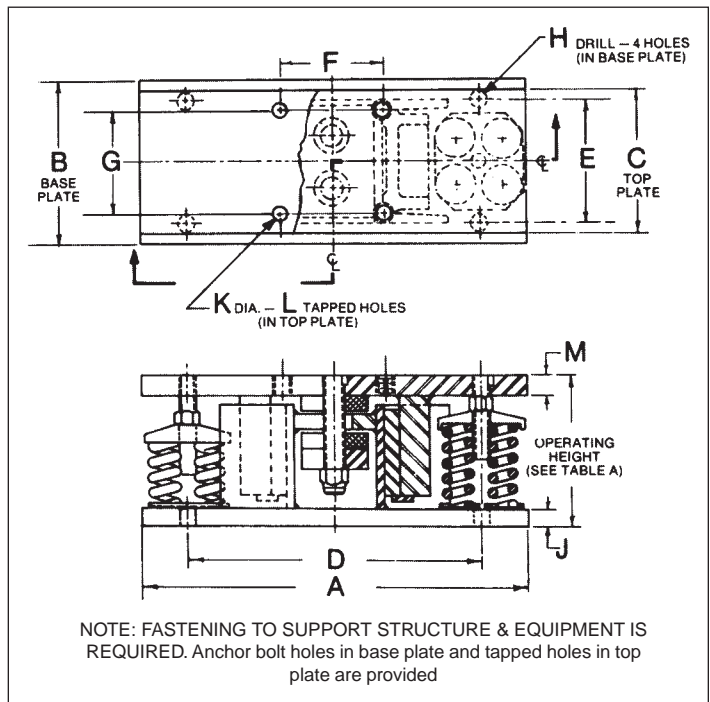
- Marine and mobile installations



Maximum Loads - Housing Sizes D, E, G

Isolator		Max. Capacity (lbs.)	Isolator Constant (lbs./in.)	Operating Height (in.) * *
Housing Size	Spring No.			
D 2 Springs	50	80	50	6 1/2
	51	200	125	
	52	320	240	
	53	480	380	
	54	800	690	
	55	1120	1120	
E 4 Springs	56	1920	3300	7
	50	160	100	
	51	400	250	
	52	640	480	
	53	960	760	
	54	1600	1380	
G 8 Springs	55	2240	2240	7 1/2
	56	3840	6600	
	50	320	200	
	51	800	500	
	52	1280	960	
	53	1920	1520	
	54	3200	2760	
	55	4480	4480	
	56	7680	13200	

**Installed height 1/4" more than operating height
Static spring deflection in inches = load ÷ isolator constant



Housing Size	Dimensions (inches)											
	A	B	C	D	E	F	G	H	J	K	L	M
D	12	5	4	9 1/4	3 1/2	3 1/2	-	1/16	1/8	3/4*	2	3/4
E	14	7	6	7	5 1/4	4	-	1/16	1/8	1/2*	2	3/4
G	18 1/4	8	7	14 1/4	6	5	5	1/16	1/8	1/2*	4	1

*STANDARD UNC THREAD



DFA Sales
www.Korfund.com
info@Korfund.com

KORFUND DYNAMICS